



**VMMPL**  
POWER OF NATURE





## ABOUT US

**Versatile Mega Mart (P) Ltd** (VMMPL) is rated amongst one of the top rooftop solar companies in India. The need of Rooftop Solar power plants is increasingly gaining popularity across a wide range of industrial, commercial, and residential sectors due to the relatively lower cost of investments and lesser complexities involved in setting up a plant. Several favorable government initiatives like subsidies and net metering policies give rise to a demand for rooftop solar projects in India. We, at VMMPL, possess years of expertise and in-house engineering capabilities to build innovative rooftop solar power plants of all sizes – from a few Kilowatts to Megawatts depending on customer requirements. Our rooftop solar portfolio comprises several renowned projects that abroad and in India.

- **OUR MISSION:**

Act as a bridge so that more and more global families and companies can access solar energy .

- **OUR VISION:**

To consolidate as one of the key participants in the renewable energy global market.

- **OUR OBJECTIVES:**

Provide smart alternatives to global families and companies that allow anyone to actively contribute to caring for the planet using clean energy.

- **OUR VALUES:**

- Loyalty and Honesty towards our clients and suppliers.
- Responsibility in each task we per form.
- Quality in our products and services.
- Respect for our employees and customers.

Focus On PV Solution    Improve Brand Service Value

## OUR FACTORY

Our factory locate in Nangli Sakrawati in Najafgarh & Bawana New Delhi India. It covers about 5000 square meters. Mean while, We have 2 production lines for Solar strut channel manufacturing unit, solar PV roof processing unit, Manufacturing solar mounting structures, clamps and Solar products such as solar panel, solar charge controller, solar power pack, online solar PCU, solar street lights, solar camera's and accessories so that we can meet with the great production capacity. We use advanced imported equipments to ensure the high quality and strength of our solar and electric products. We make a combination of manual and automation so that we can promise the 24 hours service.



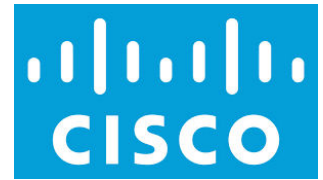


## OUR PRESTIGIOUS CUSTOMERS

Our Business Ethics helps us to achieve the huge list of fully satisfied clients spread all over the world.

Honest, Futuristic and Solution Oriented Approach

- Use of AI and technology to study potential site, energy output estimates for 40 years.
- Hassle free approval
- Incident Free, Quick Installation with mobile alerts/ alarm for a reliable and smooth experience
- Smart remote monitoring on customers app for detailed on performance
- 24/7 Dedicated customer Support for expert redressals right from the beginning to post sales



Java**India**

Lenovo



And Many More.....





<b>No.</b>	<b>CONTENT</b>
------------	----------------

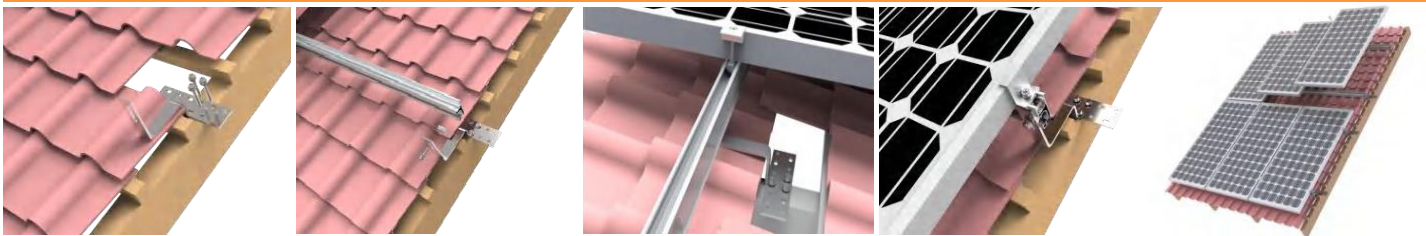
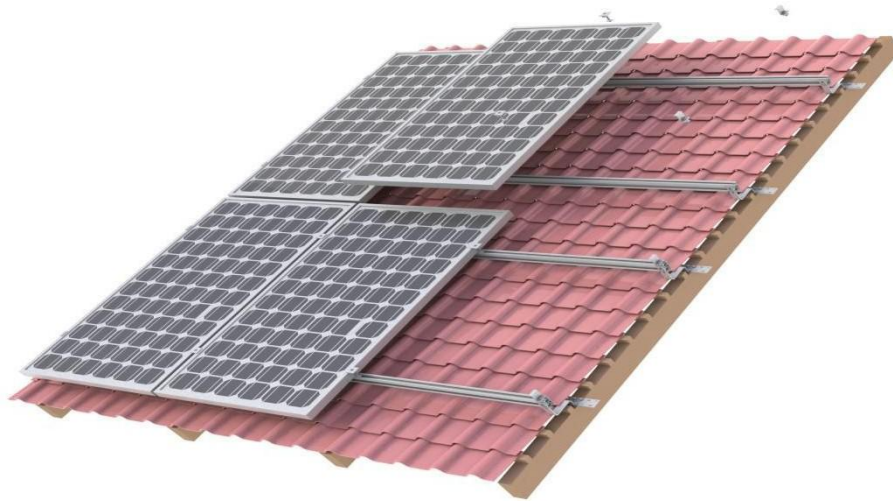
6	<b>PITCHED ROOF MOUNTING SOLUTIONS</b>
12	<b>FLAT ROOF MOUNTING SOLUTIONS</b>
18	<b>GROUND MOUNTING SOLUTIONS</b>
24	<b>CARPORT MOUNTING SOLUTIONS</b>
26	<b>GROUND SCREW</b>
27	<b>FENCE</b>
28	<b>ACCESSORIES</b>
29	<b>ENGINEERING CASES</b>
30	<b>CONTACT US</b>






# PITCHED ROOF MOUNTING SOLUTIONS

## Tile Roof Mounting System



Material	AL6005-T5	
Surface	Anodized	
Installation Site	Tile Roof	
Installation Angle	10-60 Degree	
Orientation	Horizontal/Vertical	
Wind Speed	Up to 60 m/s	
Snow Load	Up to 1.4KN/M2	

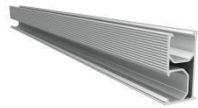




# Components



Roof Hook



Rail



Rail Splice

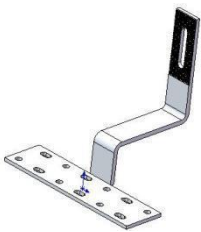


End Clamp

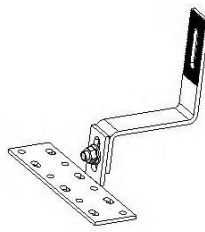


Inner Clamp

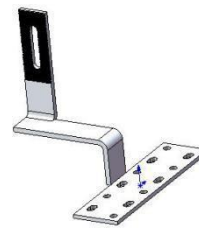
TRH-F01-NS1



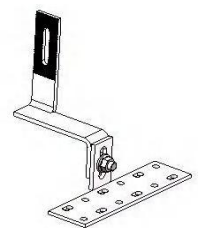
TRH-A01-NS1



TRH-F03-NS1



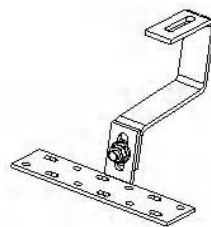
TRH-A03-NS1



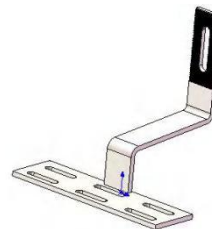
TRH-F04-RCB



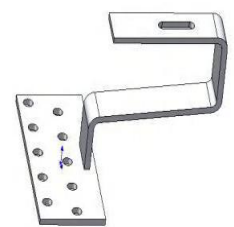
TRH-A04-RCB



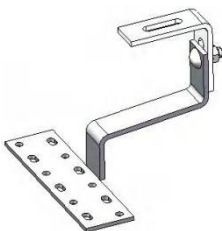
TRH-F11-NS1



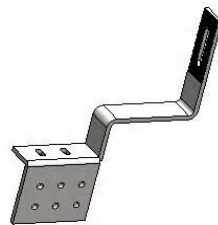
TRH-F13-RCB



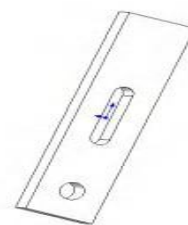
TRH-A11-RCB



TRH-S02-NS1



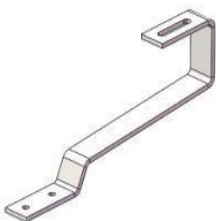
TRH-S05



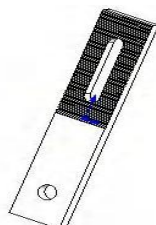
TRH-S06-NS1



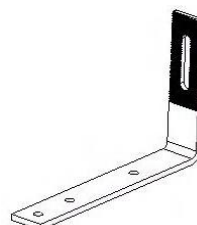
TRH-S07-RCB



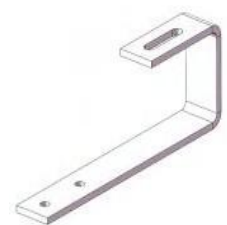
TRH-S08



TRH-S09-NS1



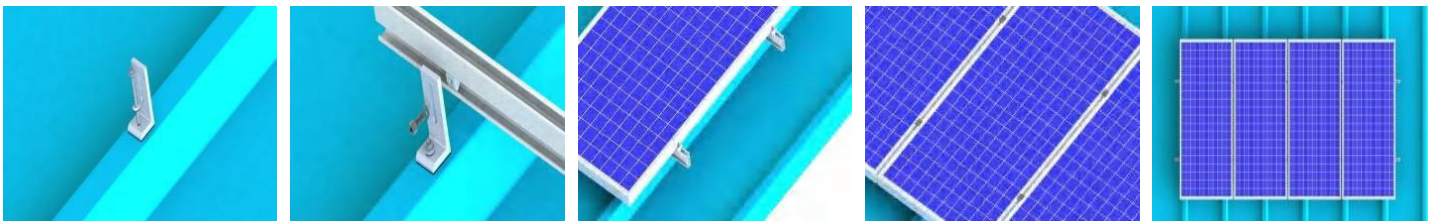
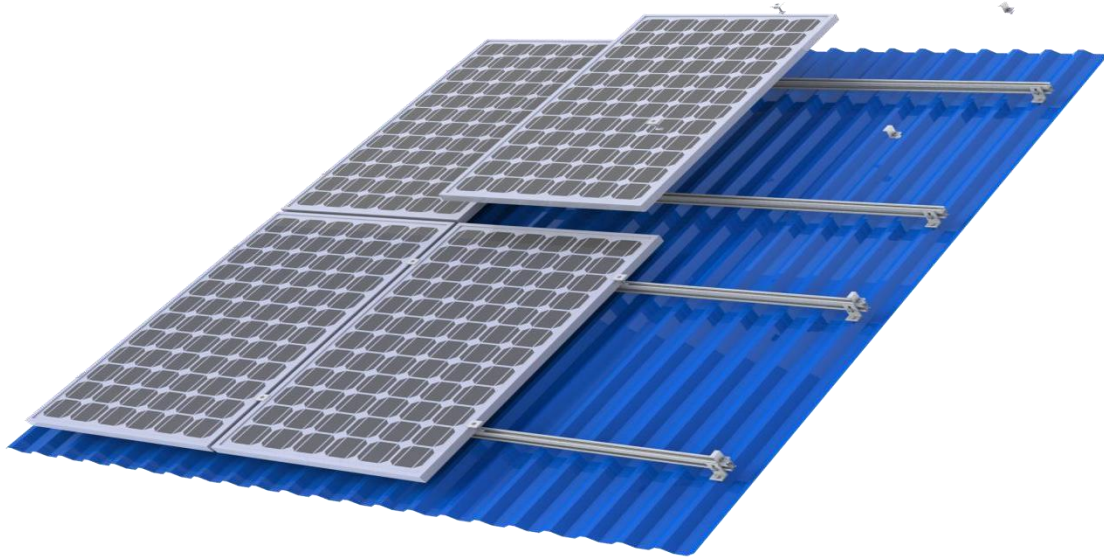
TRH-S10-RCB








# Tin Roof Mounting System



Material	AL6005-T5	
Surface	Anodized	
Installation Site	Tin Roof	
Installation Angle	10-60 Degree	
Orientation	Horizontal/Vertical	
Wind Speed	Up to 60 m/s	
Snow Load	Up to 1.4KN/M2	



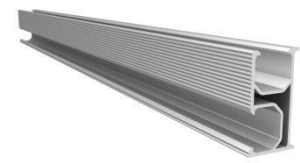
# Components



1#L Feet



2#L Feet



Rail



Rail Splice



End Clamp



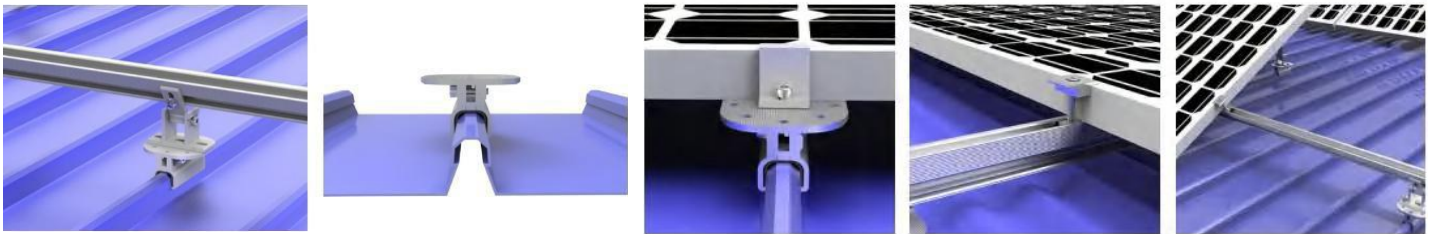
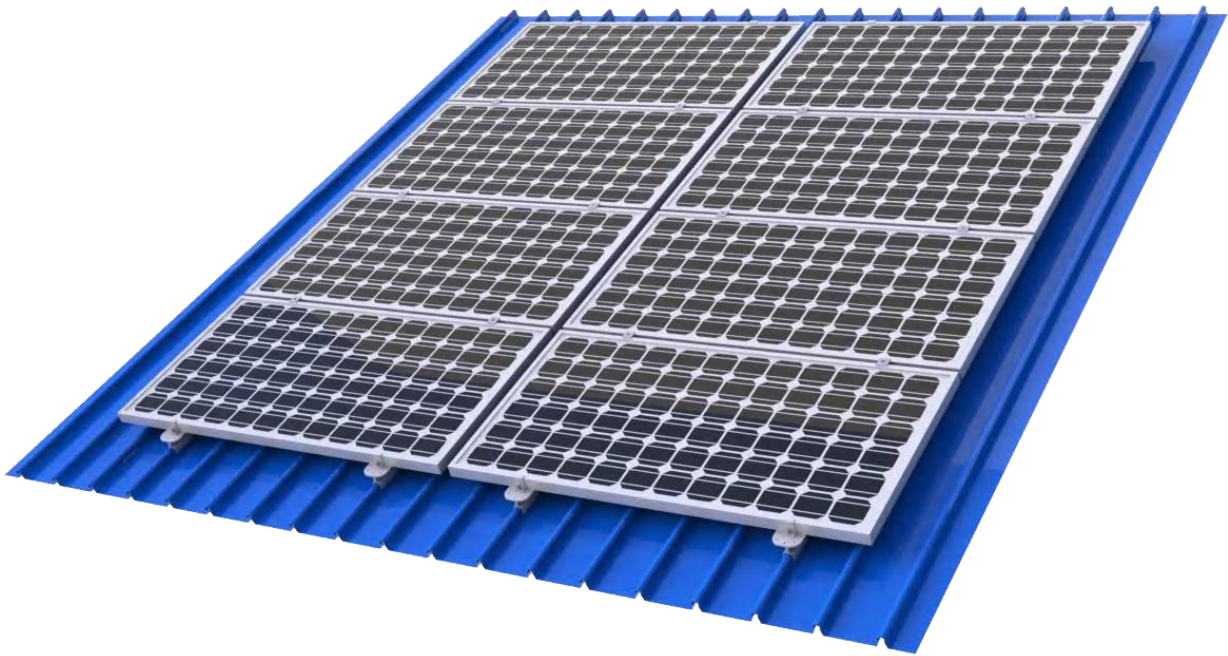
Inner Clamp








## Standing Seam Solution



Material	AL6005-T5	
Surface	Anodized	
Installation Site	Tin Roof	
Installation Angle	10-60 Degree	
Orientation	Horizontal/Vertical	
Wind Speed	Up to 60 m/s	
Snow Load	Up to 1.4KN/M2	

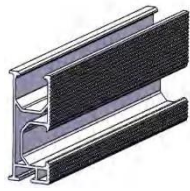




# Components



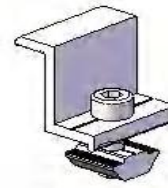
Standing Seam



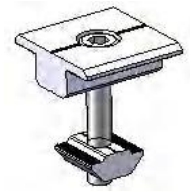
Rail



Rail Splice

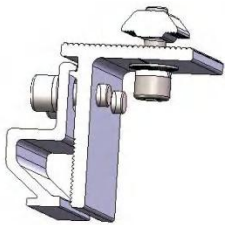


End Clamp

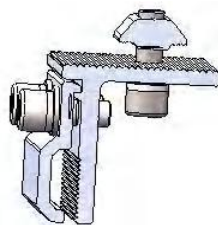


Inner Clamp

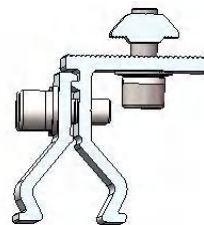
TRB-C01-NS1



TRB-C02-NS1



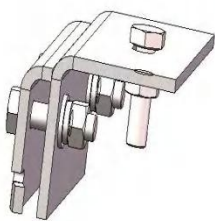
TRB-C03-NS1



TRB-C04-NS1



TRB-C05-NS1



TRB-C06-NS1



TRB-C07-NS1



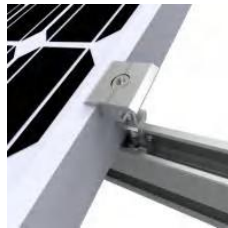
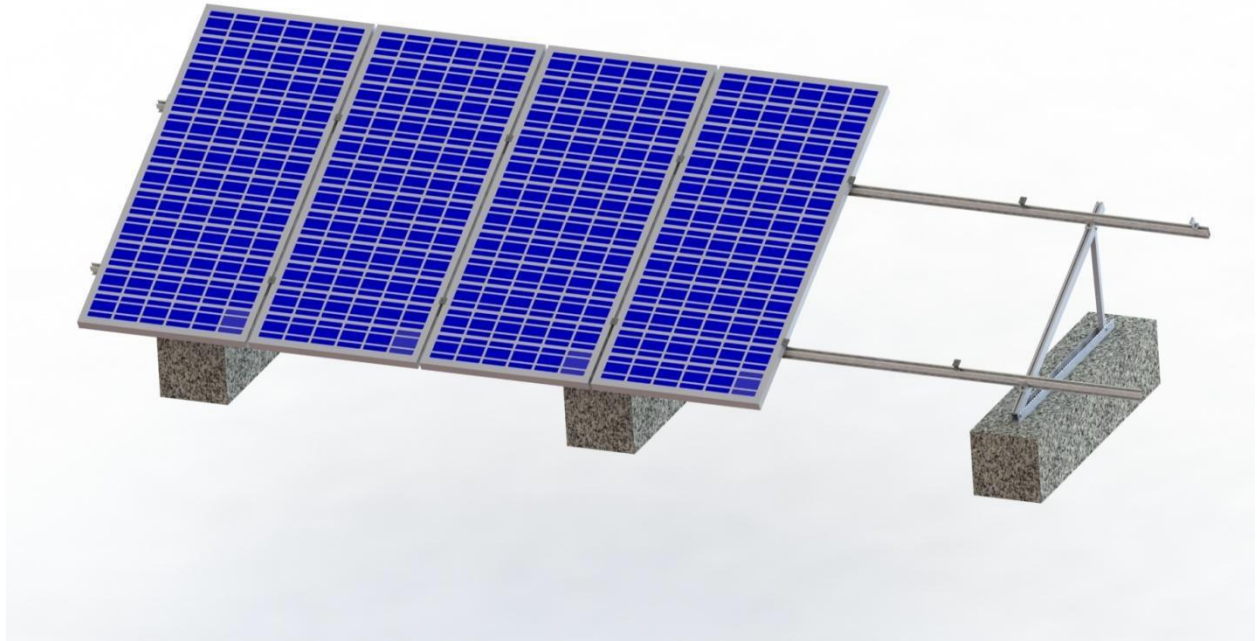
TRB-C08-NS1





# FLAT ROOF MOUNTING SOLUTIONS

## Triangle Mounting System



Material	AL6005-T5	
Surface	Anodized	
Installation Site	Flat Roof	
Installation Angle	10-60 Degree	
Orientation	Horizontal/Vertical	
Wind Speed	Up to 60 m/s	
Snow Load	Up to 1.4KN/M2	





# Components



A Frame Kit



Rail



Rail Clamp



Rail Splice



End Clamp



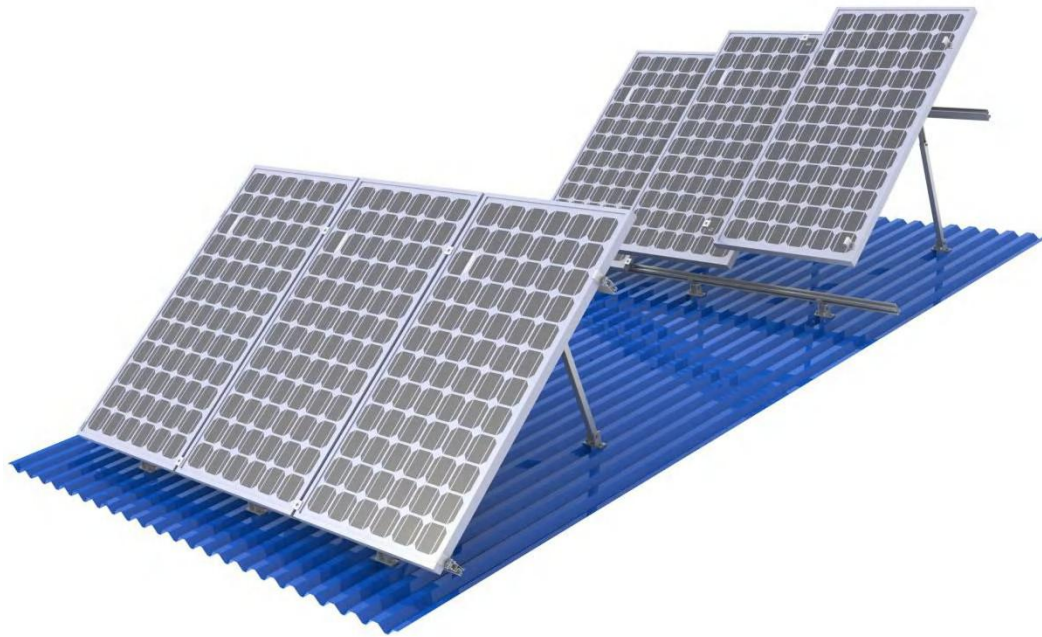
Inner Clamp








# Tilt Mounting System

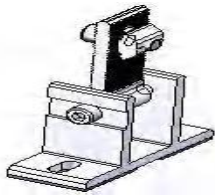


Material	AL6005-T5	
Surface	Anodized	
Installation Site	Flat/Tin Roof	
Installation Angle	10-60 Degree	
Orientation	Horizontal/Vertical	
Wind Speed	Up to 60 m/s	
Snow Load	Up to 1.4KN/M2	





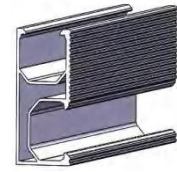
# Components



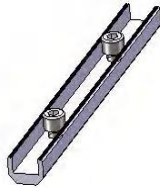
Adjustable Front Leg



Adjustable Rear Leg



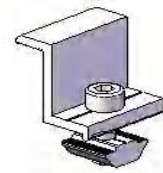
Rail Splice



Rail Splice



Inner Clamp



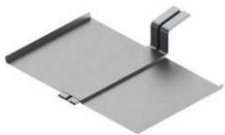
End Clamp







## Ballast Mounting System



Material	AL6005-T5	
Surface	Anodized	
Installation Site	Flat Roof	
Installation Angle	10-60 Degree	
Orientation	Horizontal/Vertical	
Wind Speed	Up to 60 m/s	
Snow Load	Up to 1.4KN/M2	





## Project Reference





# GROUND MOUNTING SOLUTIONS

## AL Ground Mounting System



VMMPL Ground Mount System is designed for medium to large scale project installation. Each system is designed for simple installation, durability, cost effectiveness and flexibility in design and installation.



Material	AL6005-T5
Surface	Anodized
Installation Site	Ground
Installation Angle	10-60 Degree
Orientation	Horizontal/Vertical
Wind Speed	Up to 60 m/s
Snow Load	Up to 1.4KN/M2





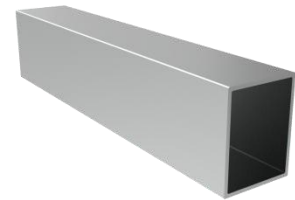
# Components



Pre-assembled  
Support



Rail



Square Tube



Rail Clamp



End Clamp



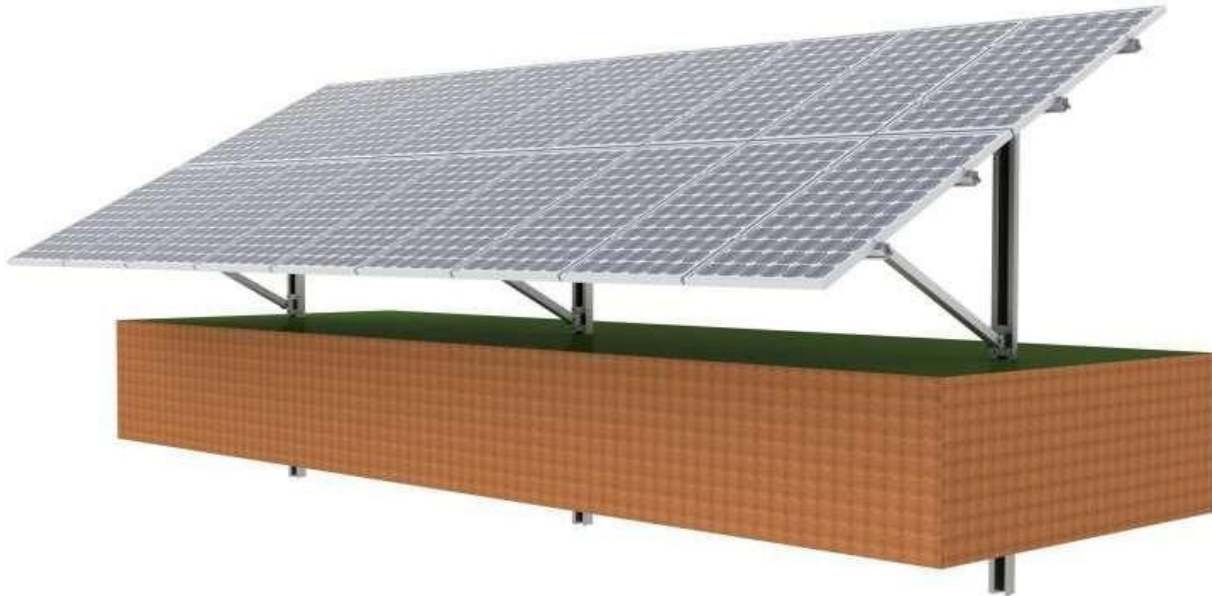
Inner Clamp



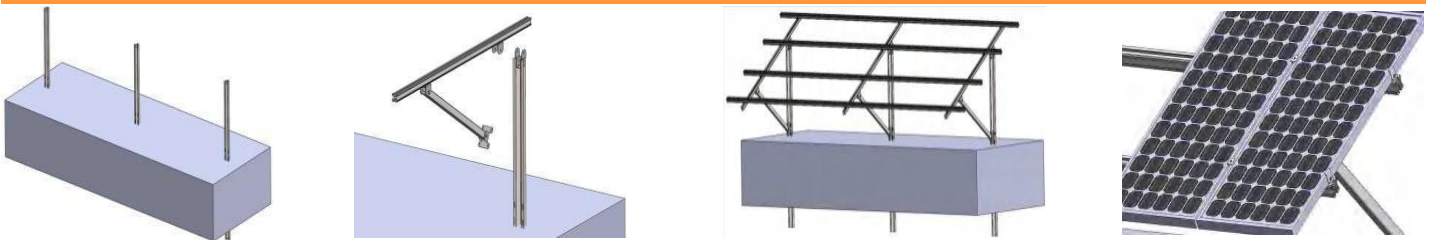




# Pile Mounting System



VMMPL Piling Mount System is designed for medium to large scale project installation. Each system is designed for simple installation, durability, cost effectiveness and flexibility in design and installation.



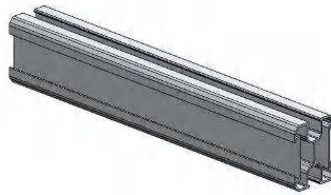
Material	AL6005-T5/SUS304
Surface	Anodized/Galvanized
Installation Site	Ground
Installation Angle	10-60 Degree
Orientation	Horizontal/Vertical
Wind Speed	Up to 60 m/s
Snow Load	Up to 1.4KN/M2



# Components



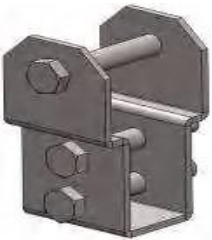
Pre-assembled  
Beam



Rail



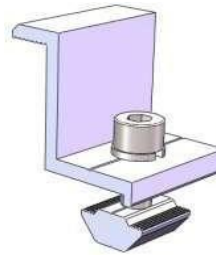
Pile Bracket



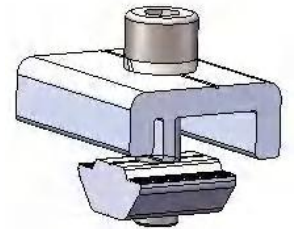
Connect



Inner Clamp



End Clamp

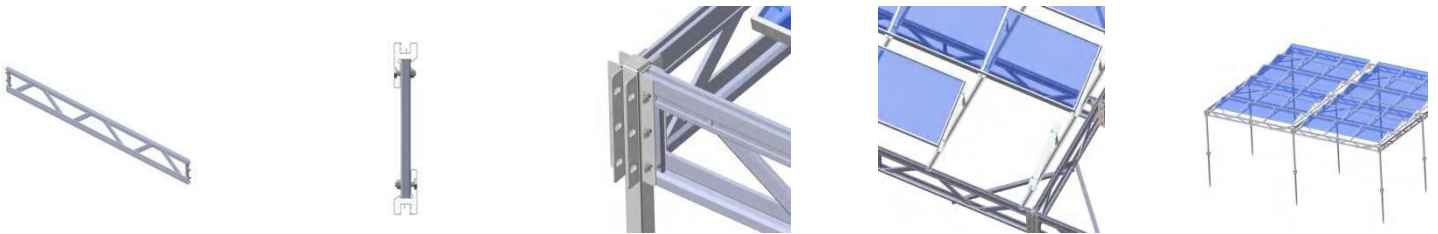


Rail Clamp





# Solar Farm System



Material	AL6005-T5/SUS304
Surface	Anodized/Galvanized
Installation Site	Ground
Installation Angle	10-60 Degree
Orientation	Horizontal/Vertical
Wind Speed	Up to 60 m/s
Snow Load	Up to 1.4KN/M2





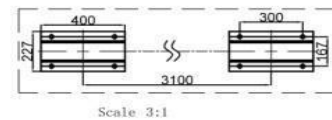
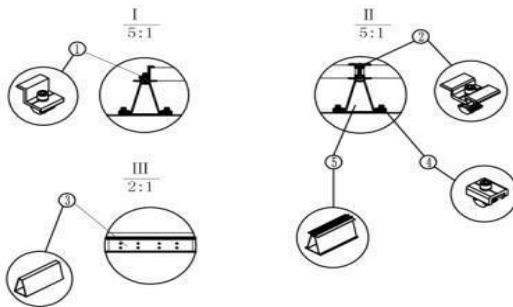
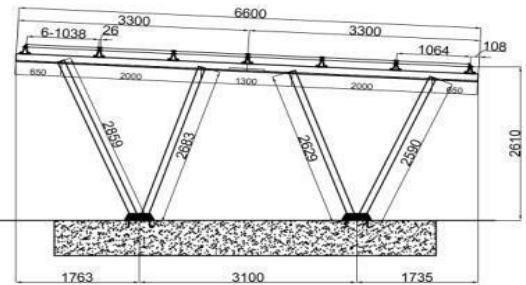
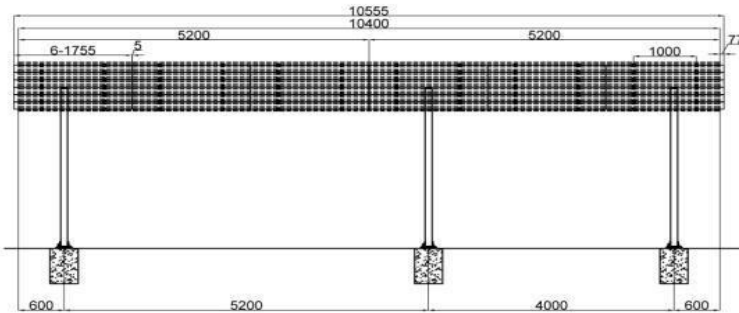


# Components





# CARPORT MOUNTING SOLUTIONS



Scale 3:1

Material	AL6005-T5	
Surface	Anodized	
Installation Site	Ground	
Installation Angle	10-60 Degree	
Orientation	Horizontal/Vertical	
Wind Speed	Up to 60 m/s	
Snow Load	Up to 1.4KN/M2	





# Components



W Shape Pre assembled Support



CSR Rail



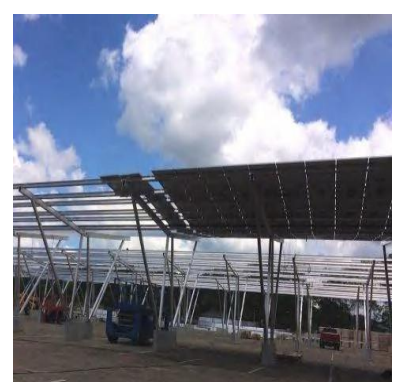
Tri Rail Clamp



End Clamp



Inner Clamp







# GROUND SCREW

VMMPL Ground Screw provides utmost stability, efficiency and sustainability to many applications, such as photovoltaic solar farm construction. Compared to concrete footings, which can take hours to set, Power screw can be installed in just minutes and built on immediately.



Product Name	Specification	Material	Surface Treatment
Ground Screw	φ76×3.0×φ220×L1200	Q235B	Galvanized
Ground Screw	φ76×3.0×φ220×L1600	Q235B	Galvanized
Ground Screw	φ76×3.0×φ220×L1800	Q235B	Galvanized
Ground Screw	φ76×3.0×φ220×L2000	Q235B	Galvanized
Ground Screw	φ76×3.0×φ220×L2200	Q235B	Galvanized



Product Name	Specification	Material	Surface Treatment
Five Blade Ground Screw	φ76×3.0×φ220×L1200	Q235B	Galvanized
Five Blade Ground Screw	φ76×3.0×φ220×L1600	Q235B	Galvanized
Five Blade Ground Screw	φ76×3.0×φ220×L1800	Q235B	Galvanized
Five Blade Ground Screw	φ76×3.0×φ220×L2000	Q235B	Galvanized
Five Blade Ground Screw	φ76×3.0×φ220×L2200	Q235B	Galvanized



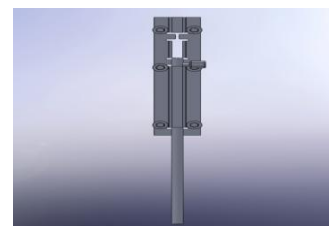
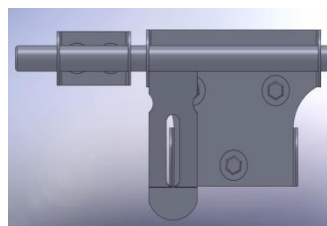
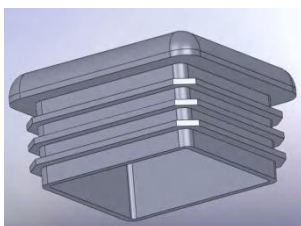
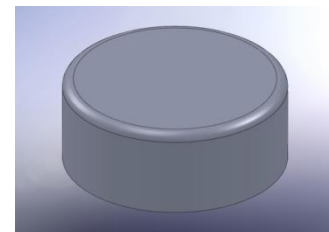
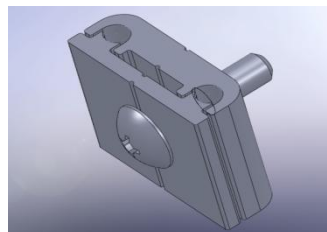
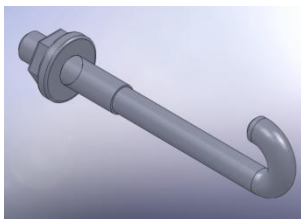
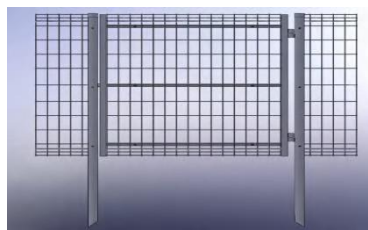
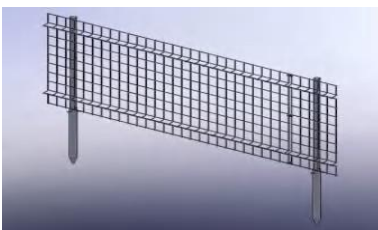
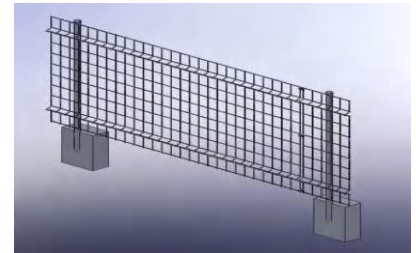
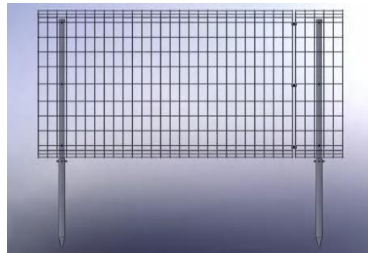
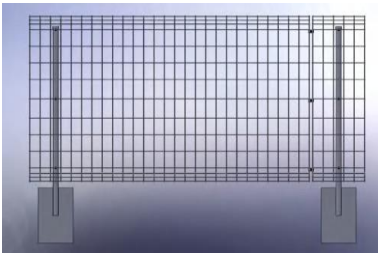
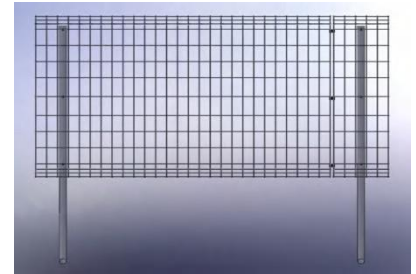
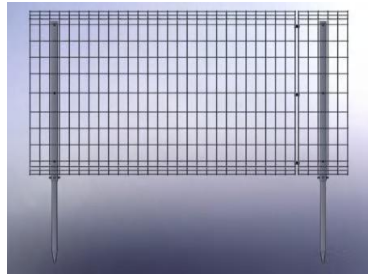
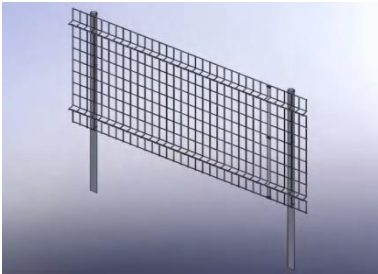
Product Name	Specification	Material	Surface Treatment
Adjustable Ground Screw	φ76×3.0×L1200+220*L600*t2.5	Q235B	Galvanized
Adjustable Ground Screw	φ76×3.0×L1600+220*L600*t2.5	Q235B	Galvanized
Adjustable Ground Screw	φ76×3.0×L1800+220*L600*t2.5	Q235B	Galvanized
Adjustable Ground Screw	φ76×3.0×L2000+220*L600*t2.5	Q235B	Galvanized
Adjustable Ground Screw	φ76×3.0×L2300+220*L600*t2.5	Q235B	Galvanized



Product Name	Specification	Material	Surface Treatment
Adjustable Five Blade Ground Screw	φ76×3.0×L1200+220*L600*t2.5	Q235B	Galvanized
Adjustable Five Blade Ground Screw	φ76×3.0×L1600+220*L600*t2.5	Q235B	Galvanized
Adjustable Five Blade Ground Screw	φ76×3.0×L1800+220*L600*t2.5	Q235B	Galvanized
Adjustable Five Blade Ground Screw	φ76×3.0×L2000+220*L600*t2.5	Q235B	Galvanized
Adjustable Five Blade Ground Screw	φ76×3.0×L2300+220*L600*t2.5	Q235B	Galvanized

# FENCE

VMMPL fence is produced by highly quality control and strength test. VMMPL has types of fence for customer's requirements. And it can be widely used for solar plants, -farms, gardens, poultry farms etc.







# ACCESSORIES

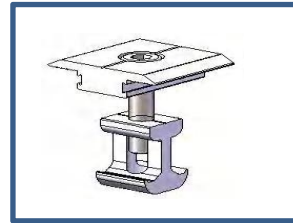
We have a full range of useful accessories for our customer's successful PV installation.



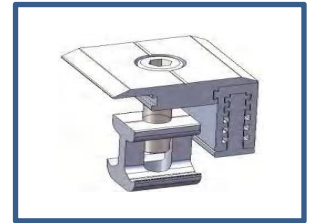
Thin Film End Clamp



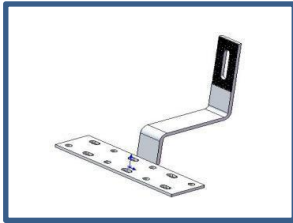
Thin Film Mid Clamp



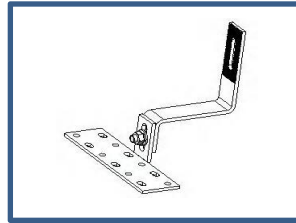
Adjustable Mid Clamp



Adjustable End Clamp



Fixed Hook



Adjustable Hook



Hanger Bolt



Hanger Bolt with single hook



Hanger Bolt with L feet



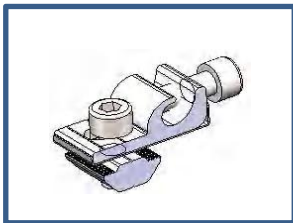
Expansion Bolt



Cable



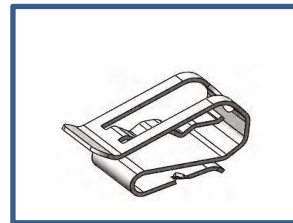
MC4 Connector



Ground Lug



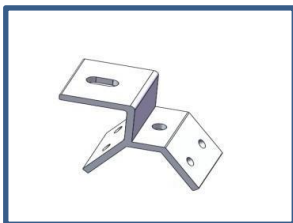
Earthing Clip



Stainless Steel Cable Clip



Plastic Cable Clip



T Shape hook



Single Hook



Bonding Jumper



Isolator Cover



# PROJECT REFERENCE



1MW Project in Canada



50KW Project in Brazil



40KW Project in Malaysia



2MW Project in South Africa



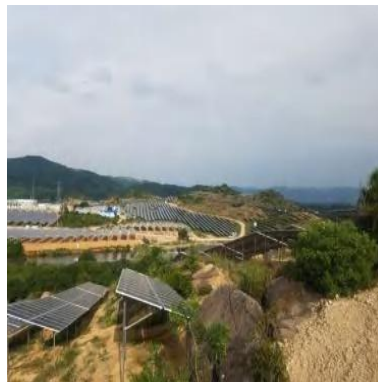
50KW Project in Thailand



4MW Project in Vietnam



10MW Project in UAE



1MW Project in Kerla



500KW Project in Panama



4MW Project in Mysore



1MW Project in Maharashtra



2MW Project in Bangalore India



**VMMPL**  
POWER OF NATURE



## CONTACT US

VERSATILE MEGA MART (P) LTD.  
(An ISO 9001-2015 Certified Co.)

Registered Office:- A-35, Jain Park Main Matiala Road Uttam Nagar-110059 (INDIA)

Plant/ Unit 1 Address:- Plot No. 3 Khasra No.11/25  
Khata No. 22/76 Min Village Nangli Sakrawati Industrial Area Opp.Dwarka Express way  
Highway Near Campa Cola Godown & HT Line New Delhi 110043

Contact : Mr. Dinesh Kumar (Director) Marketing & Operation  
Mobile: 9818388747.9212779988  
Email: [info@solargreennature.com](mailto:info@solargreennature.com), [solarvmmpl@gmail.com](mailto:solarvmmpl@gmail.com)  
Website: [solargreennature.com](http://solargreennature.com)